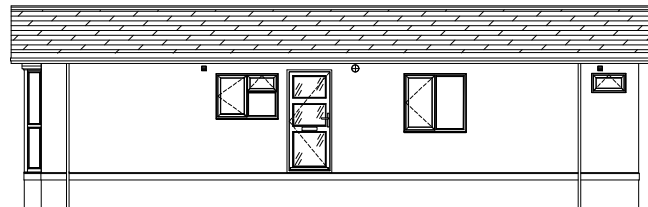
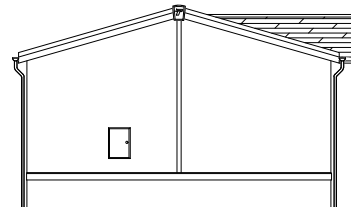


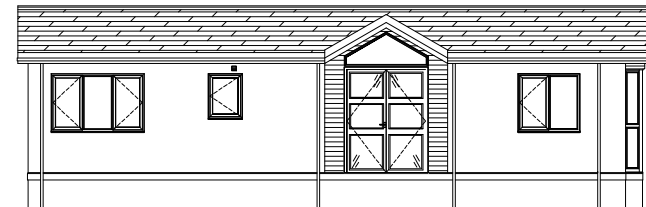
Scale 1:150



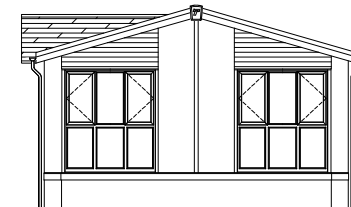
Rear Elevation



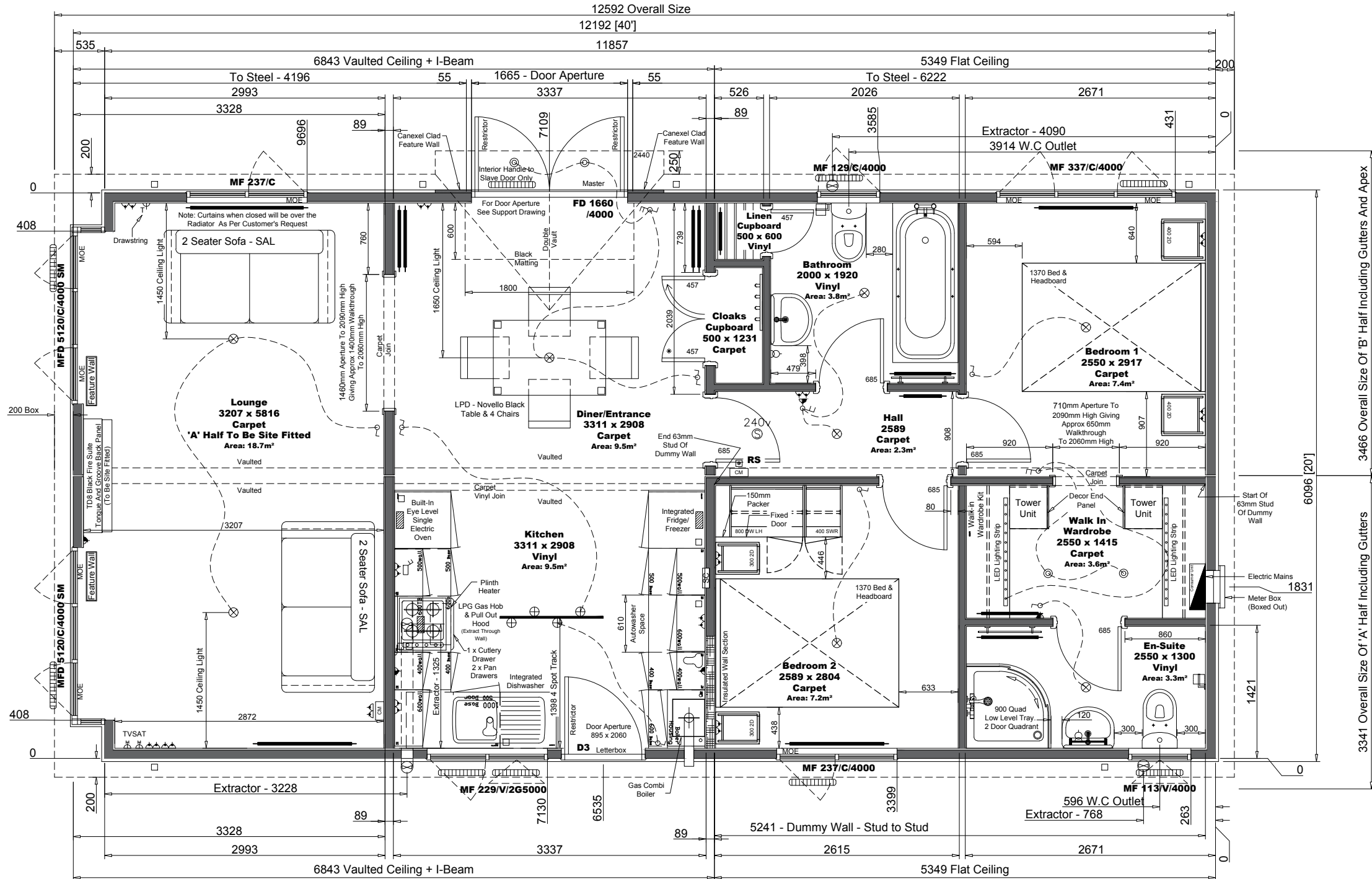
End Elevation (Bedroom)



Front Elevation



End Elevation (Lounge)



Roof Trusses	
Code:	Quantity:
D00304_V	36
D00304_V_Mill	2
D00302_F	28
D00302_F_Mill	2

Build Notes:
 16° Pitch Roof
 Vaulted Ceilings To Lounge, Diner & Kitchen
 4 Steel Beams & 2x I-Beams Required

This unit is the MIRROR IMAGE of the Tingdene standard layout

Copyright Notice:
 This drawing and the information contained in it, is the property of Tingdene Homes Ltd. It may not be used, transmitted or reproduced, in whole or in part, without prior written consent from Tingdene Homes Ltd. Copyright ©.

Model:	Hayden Classic	
Size:	Metric: 12.192 x 6.096	Imperial: 40 x 20
Park:	Whitearch Touring Caravan Park	
Customer:	Stock	

DOUBLE SWITCHED SOCKET	ELECTRIC TAILS ONLY	240V	SMOKE DETECTOR
SINGLE SWITCHED SOCKET	PENDANT LIGHT FITTING	ELECTRICAL CONSUMER UNIT	RADIATOR SCHEDULE
LIGHT SWITCH	BATTEN LIGHT FITTING	EXTERNAL POWER POINT	Lounge SS 60 120 + SS 60 100
LIGHT SWITCH PULL CORD	TELEPHONE POINT	EXTERNAL LIGHT FITTING	Diner / Entrance 2 x SD 60 60
FUSED SPUR	TELEVISION OR SATELLITE POINT	IP RATED LIGHT FITTING	Kitchen Plinth Heater
COOKER SWITCH	CARBON MONOXIDE DETECTOR	WASHING MACHINE PLUMBING	Linen Cup'd SS 60 40
DOWNLIGHT	HEATING THERMOSTAT	RADIATOR	Bathroom SS 60 60
WALL LIGHT	EXTRACTOR FAN	EXTERNAL TAP	Bedroom 1 SS 60 100
			Bedroom 2 SS 60 100
			Walk In Wardrobe SS 60 60
			Ensuite SS 60 60
			Hall SS 60 40
			TRV's To All Rads (Except Hall)

DATE DRAWN	BY
13.06.16	AS2
1	
2	
3	
4	
5	
6	

Scale:	Sales No:	S.O. No:
1:50	Q16000117	160151_P

TING DENE

Tingdene Homes Limited.
 Bradfield Road, Finedon Road Ind. Est., Wellingborough,
 Northants, NN8 4HB
 Tel: +44(0)1933 230100 Fax: +44(0)1933 272216
 www.tingdene.co.uk

Support Drawings	
Description	DWG No.
Vaulted Walls	160151_VW
Vaulted Lights	160151_VL
Glazed Apex	160151_GA

Transport Dimensions:
 Note: Weights are for Guidance ONLY

Height: 4.142
 Width N/S: 3.341
 Weight N/S: 7284
 Width O/S: 3.466
 Weight O/S: 6884
 Band: F Axles: 2